

LITTLE SABINE, LAFITTE COVE & BABY BEACH IMPROVEMENTS



SANTA ROSA
ISLAND AUTHORITY



BASKERVILLE-DONOVAN, INC.
ENGINEERING THE SOUTH SINCE 1927

Projects Included

- Little Sabine Inlet Maintenance Dredge
- Baby Beach Nourishment Project
- Lafitte Cove Inlet Maintenance Dredge
- Baby Beach Drainage Improvements

Projects Included



- **Little Sabine Inlet Maintenance Dredge**
 - Updated USACE Nationwide/FDEP Permits & Exemptions 2022
 - *Exp. 2026 (USACE)
- **Baby Beach Nourishment Project**
 - USACE Nationwide/FDEP Permits Obtained 2017
 - *Exp. 2026 (FDEP) & 2027 (USACE)
- **Lafitte Cove Inlet Maintenance Dredge**
 - Updated USACE Nationwide/FDEP Permits & Exemptions 2022
 - *Exp. 2026 (USACE)

Projects Included

- Little Sabine Inlet Maintenance Dredge

Little Sabine Dredge

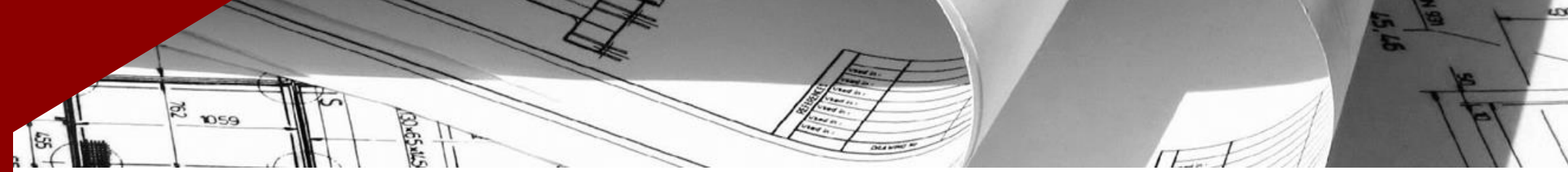
- Approx. 900 Ft. x 80 Ft. of Dredge Area
- Maintained Dredge Depth 8 Feet Below MHWL
- Estimated 2000 CY Yield from Dredge



LITTLE SABINE INLET



LITTLE SABINE SPOIL CELL



Projects Included

Architectural blueprints and technical drawings are visible in the top right corner of the slide, partially overlapping the red header bar. The drawings include various lines, dimensions, and tables, typical of engineering or construction plans.

- Little Sabine Inlet Maintenance Dredge
- Baby Beach Nourishment Project

BABY BEACH NOURISHMENT OBJECTIVES

- Identify, Screen, and Remove Rock, Shell and Other Large Debris Located Within the Permitted Template
- Restore 10:1 Slopes Established in 2017
- Re-Establish the Approx. 2017 MHWL



BABY BEACH 2017



BABY BEACH 2019



Baby Beach - March 2019

ROCK & DEBRIS



DEBRIS



Photo Provided by Liz Jasperson

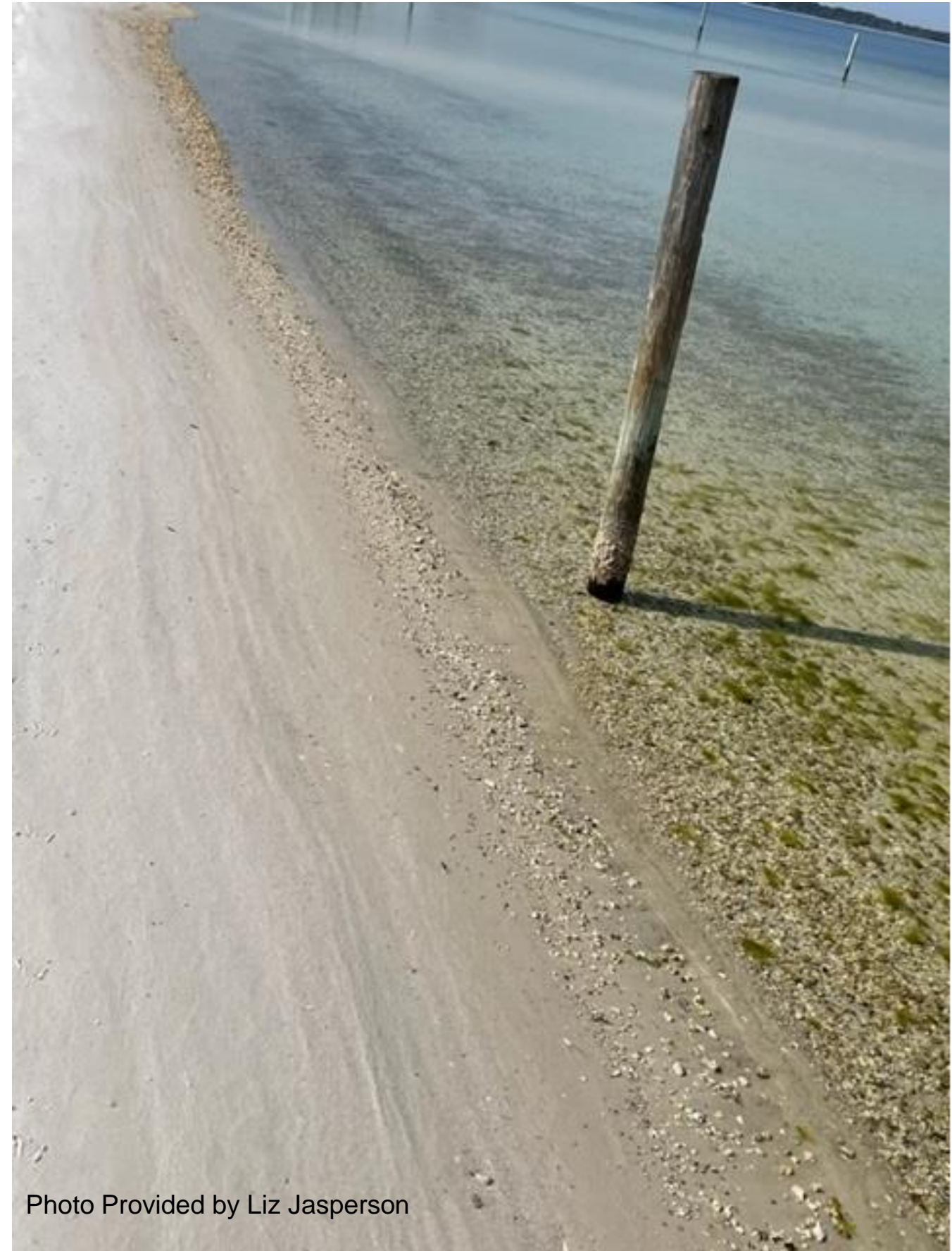


Photo Provided by Liz Jasperson

Project Information

Architectural blueprints showing various technical drawings, including a table with columns for 'STATION', 'ELEVATION', and 'REMARKS'. The table contains several rows of data, and the drawings include lines, curves, and dimensions.

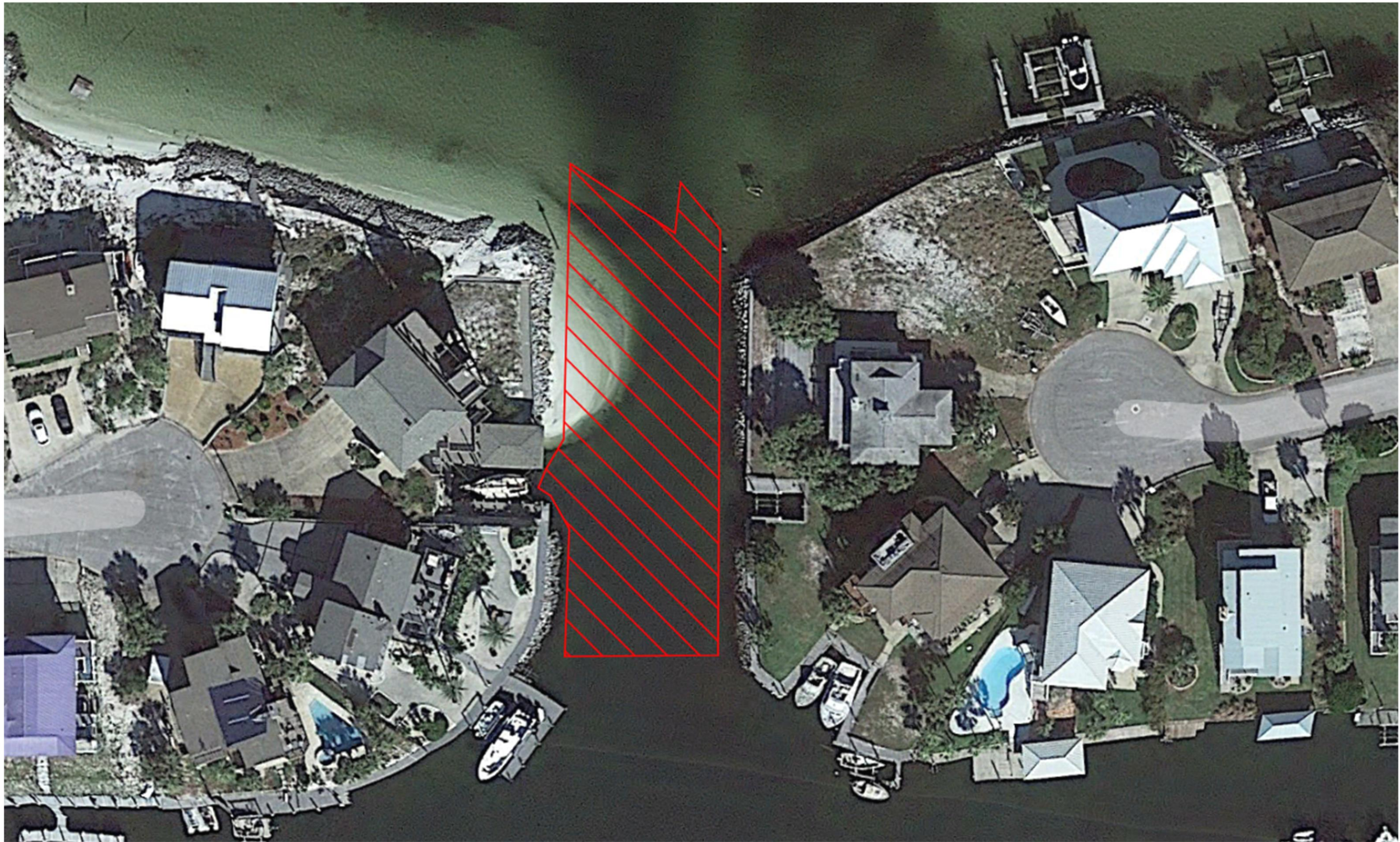
- Little Sabine Inlet Maintenance Dredge
- Baby Beach Nourishment Project
- Lafitte Cove Inlet Maintenance Dredge

Little Sabine Dredge

- Approx. 160 Ft. x 80 Ft. of Dredge Area
- Maintained Dredge Depth 5 Feet Below MLW
- Estimated 1500 CY Yield from Dredge
- Interlocal Agreement B/W SRJA & Escambia County



LAFITTE COVE DREDGE



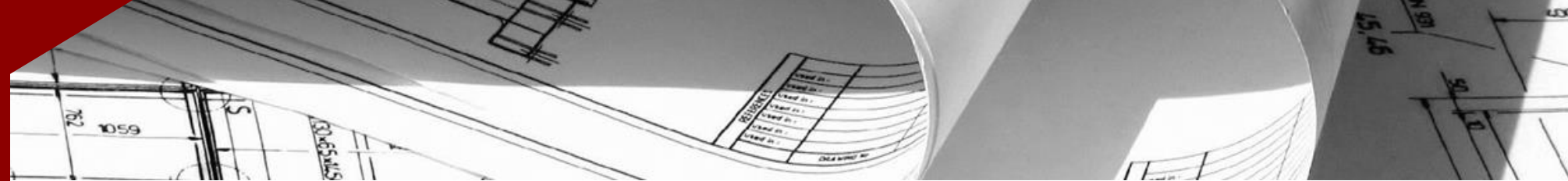
LAFITTE COVE DREDGE



Projects Included

- Little Sabine Inlet Maintenance Dredge
- Baby Beach Nourishment Project
- Lafitte Cove Inlet Maintenance Dredge
- Baby Beach Drainage Improvements

BABY BEACH DRAINAGE OBJECTIVES



- Prevent Continued Stormwater Erosion onto Baby Beach
- Protect the Shoulders and Roadway of Rio Vista Drive
- Enhance Environmental Features of Baby Beach

LOCATION



DRAINAGE



EROSION



EROSION



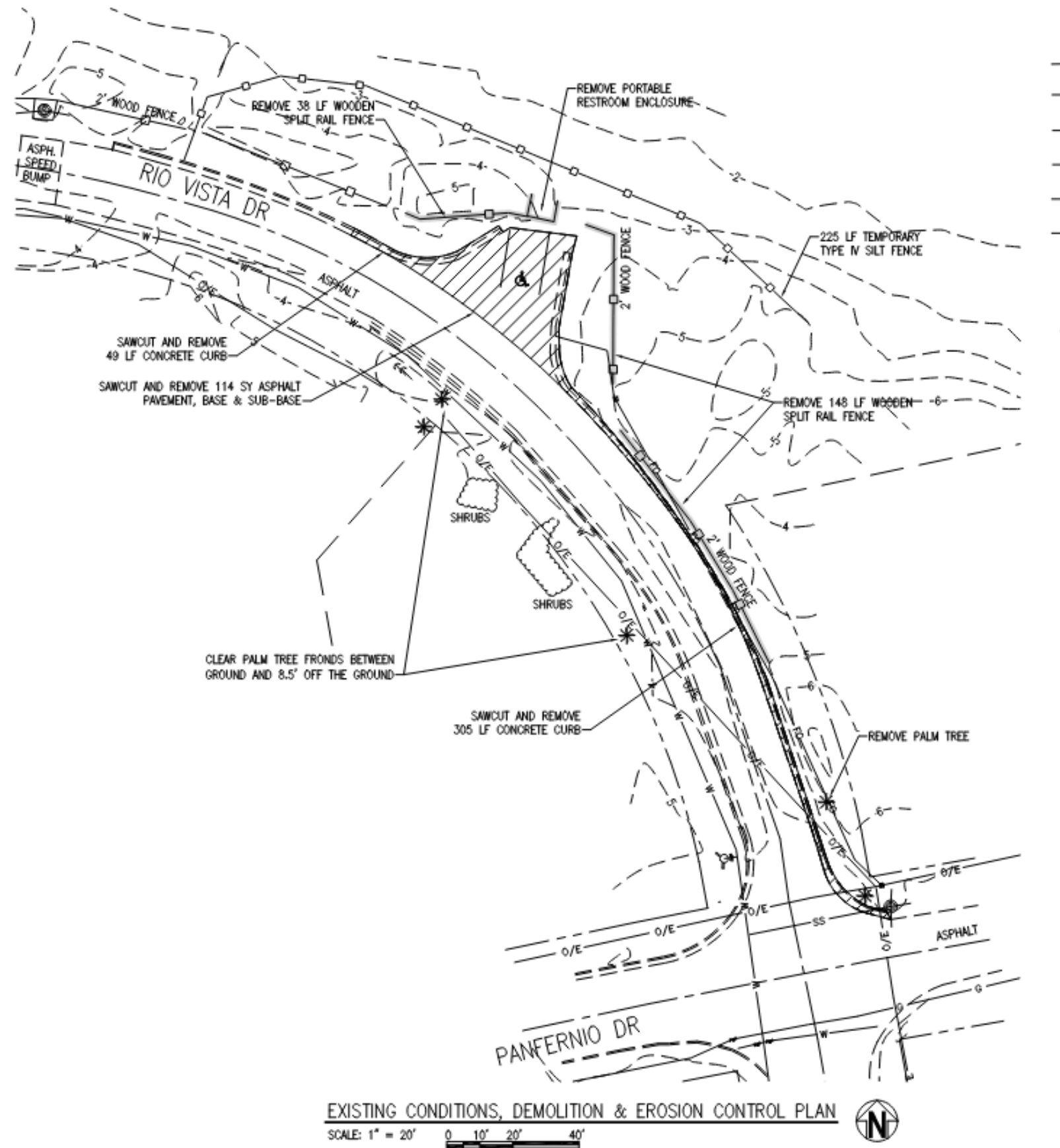
EROSION



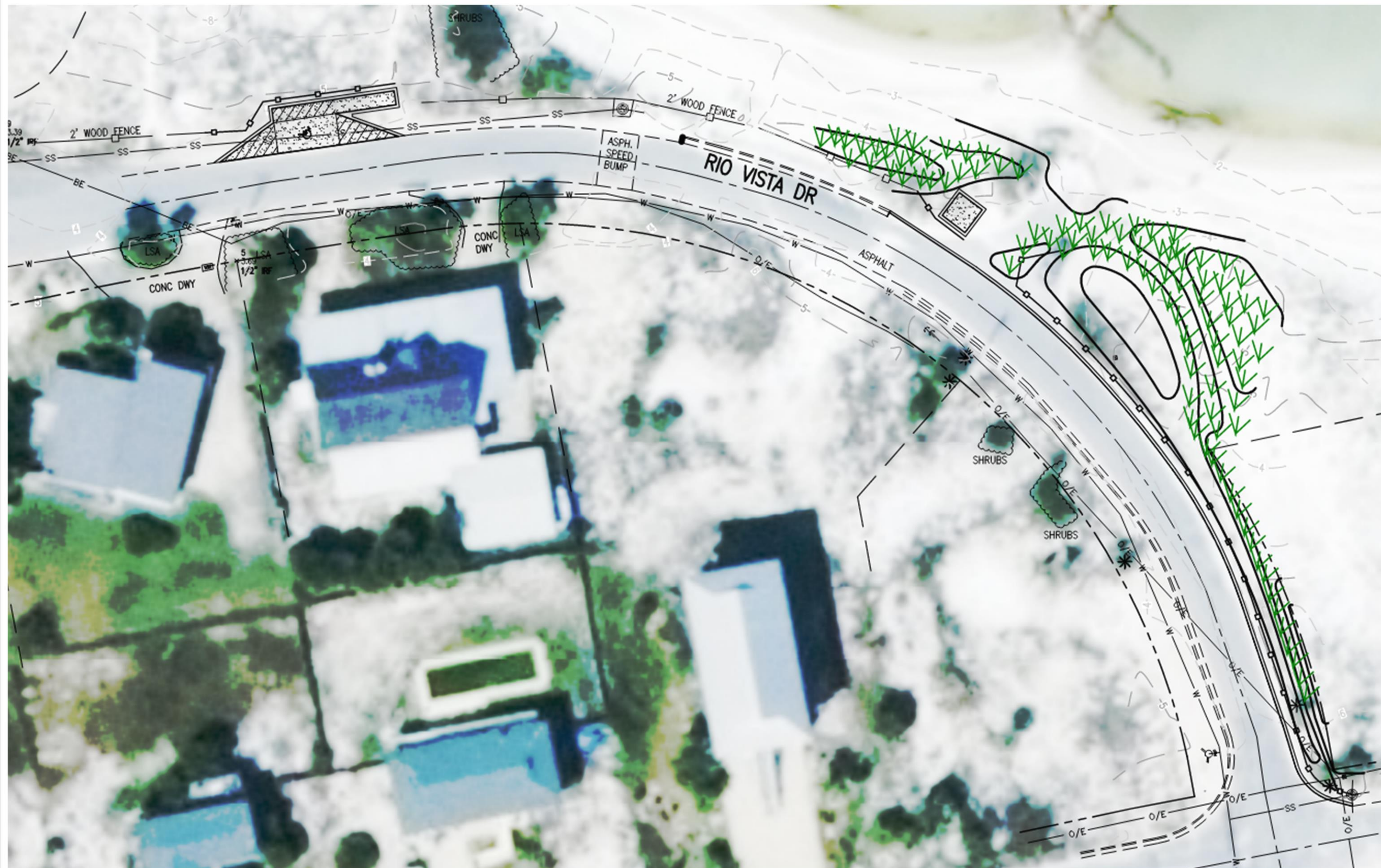
EROSION



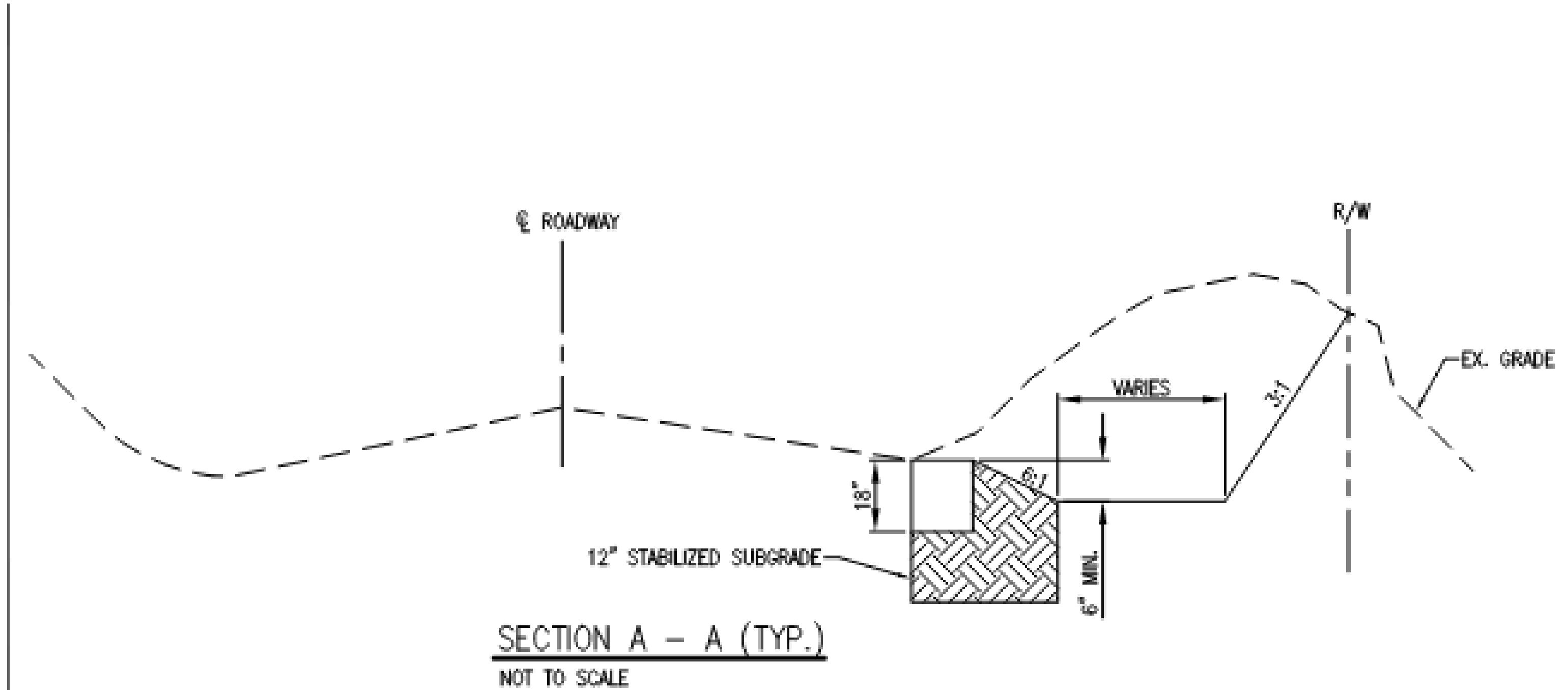
DRAINAGE



DRAINAGE



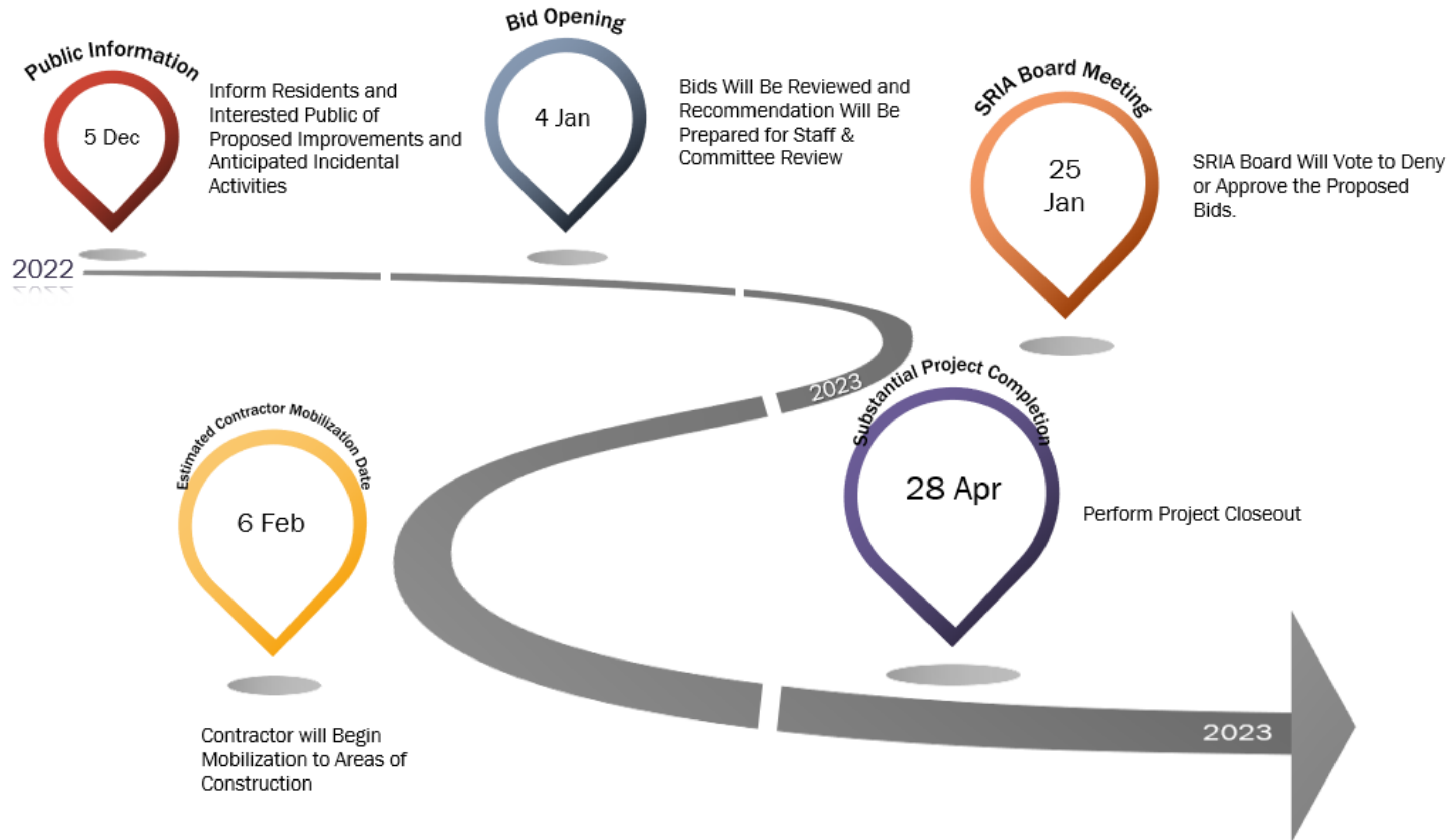
TYP. SECTION



TEMP. IMPACTS

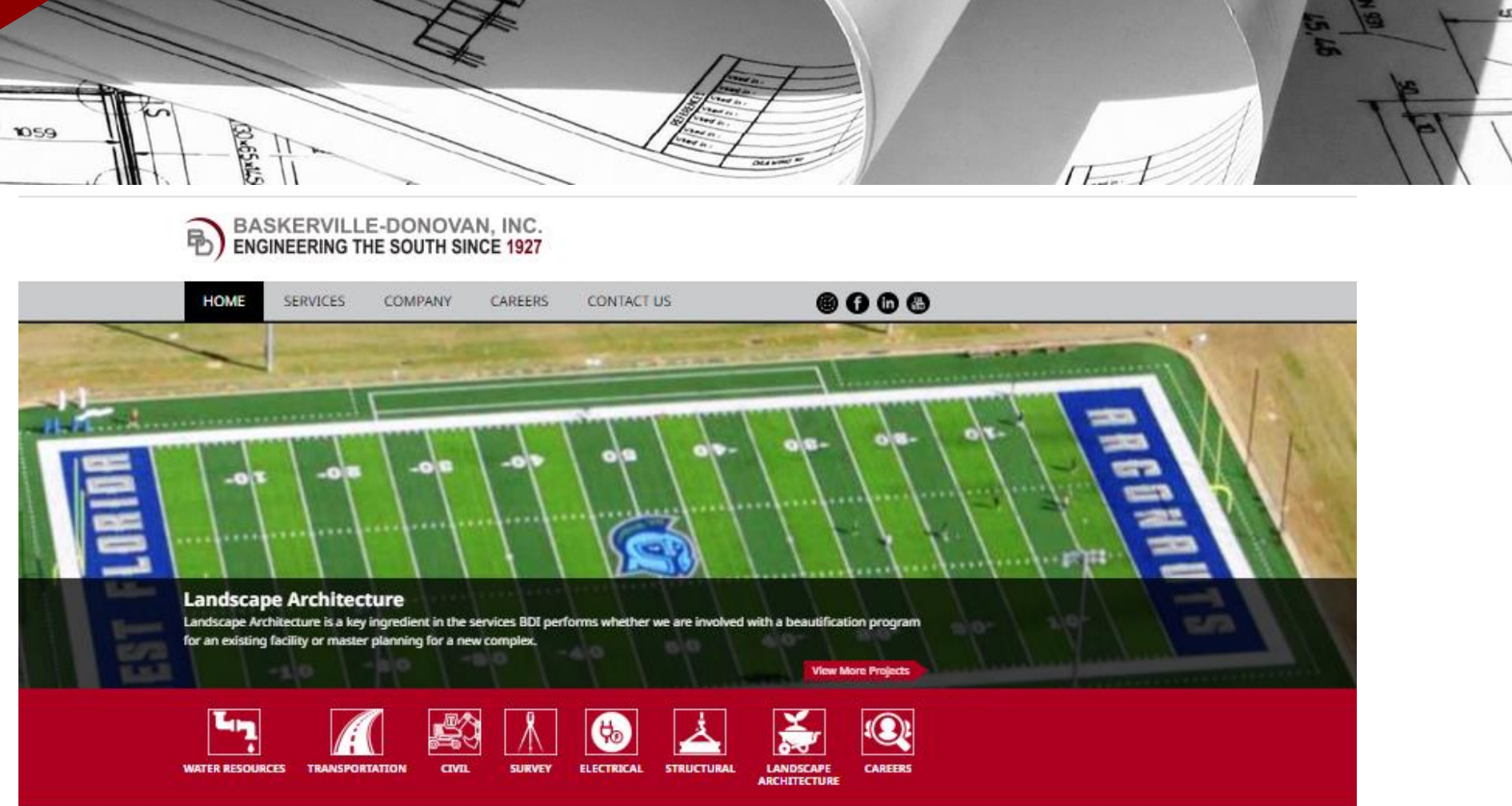


SCHEDULE



COMMENTS

WWW.BaskervilleDonovan.com



Baskerville-Donovan, Inc. – Decades of Engineering Experience

BDI's Passion for Work & Life

At BDI, you will find abundant opportunities from your first day on the job—opportunities to gain real-world experience on stimulating and rewarding projects, the ability to grow and advance within a great company, and the chance to live and work in a wonderful area.

- Learn organically working side by side with experienced mentors
- Explore every facet of the business and discover what your passions are
- Enjoy a fun work atmosphere with impromptu socials and annual events
- Become part of a 95-year legacy of building communities and changing lives

Join a team of talented professionals who will help you develop your skills while giving you the freedom to express your ideas. Whether you are an experienced civil engineer or a fresh-faced college graduate, you owe it to yourself to learn more about Baskerville-Donovan, Inc.

At Baskerville-Donovan, Inc., we are *"Making a positive difference for our clients and communities, together."*

